

SPENCERMANON



LOOKBOOK
2024

At SpencerManon, every quilt has its own history. Crafted with a bold mix of premium fabrics and pre-loved materials, no two quilts are alike. We blend custom center panels with intricate digital designs, creating pieces that are not just beautiful, but functional art for your space.

Many of our quilts are born from creative challenges with classmates, guild members, and friends. Whether it's starting with a pattern and finding the perfect material to elevate it, or falling in love with a fabric and hunting for the right pattern to showcase it, we thrive on pushing boundaries. We curate fabrics for specific themes and pull from our stash when the right project or sew-along comes up. Thrifting is our jam—we love pairing secondhand finds with high-end designer fabric to create unexpected, one-of-a-kind masterpieces.

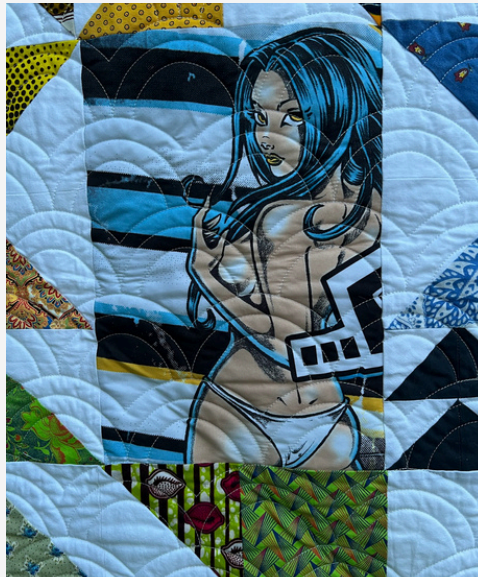
Once the blocks are sewn into a quilt top, we design backings—often using pieced fabrics—that complement the front. Once our quilts are pieced, we typically send them off to receive their finishing touches from a long arm quilter, who brings the piece together with a digital design or custom work.



SpencerManon isn't just about quilts—it's about making waves in a traditional industry and redefining what it means to create.

POSEIDON'S DAUGHTERS





Featuring a bold composition of our Lost Girls, Poseidon's Daughters brings a vibrant fusion of styles. This anime-inspired quilt blends scrappy fabrics, bold African wax prints, and playful anime boardshort motifs. Designed by Catherine Potdevin, this piece draws inspiration from Steph Jacobson's iconic 2021 Modern HST BOM designs. The backing features a quadrant style piecing, comprised of coastal prints.

\$850

NOT MY FIRST RODEO





\$1150



Designed by Catherine Potdevin, Not my First Rodeo showcases a blend of western fabrics and cowgirl aesthetics. Inspired by the “Out West” Pat Sloan Sew Along, this quilt features digital design elements, including delicate barbed wire motifs, along with custom center panel work. Using a fusion of Alexander Henry fabric, pre-loved clothing items, and floral motifs, Not my First Rodeo brings a playful western vibe to any space.



B* TCH I AIN'T CHERRY



Featuring one of our beautiful lost girls, B*tch I ain't Cherry is not for the faint-hearted. With blocks from the Fussy Cut Sampler Quilt Book, and a thrifted center panel, it creates a bold statement that is meant to be a head-turner. Crafted by Catherine Potdevin, this piece has striking blocks that integrate a variety of themes and styles. On the back, you'll find daring fabrics, placed in a sleek linear pattern. To tie it all together, we utilized custom quilting in the center with a "heat wave" outline, done by Randall Quilting & Design, to add a final touch of personality.



\$1500

SCOOPS OF SHERBERT





Pieced by Catherine Potdevin, with custom quilting by Matt Randall, Scoops of Sherbert features a striking combination of vibrant rainbow blocks. On the back, you'll find a unique blend of colorful fabrics, perfectly complementing its electrifying front. Inspired by the dynamic Gnome Angel's Kinship 100+ Blocks Sampler pattern, paired with the edgy layout of Tula Pink's City Sampler, this piece creates a cool fusion of modern design and traditional patterns.

\$2500

LOCALS ONLY





Designed by Catherine Potdevin, Locals Only captures the bold essence of coastal energy. With its scrappy fabrics, dynamic patterns, and South Bay-native references, this quilt embodies the vibrant, surf-inspired energy of Hermosa Beach. On the back, you'll find a simple, yet elegant linear blend of ocean fabrics. With its custom piecing, and west wind digital design, it brings an edgy, laid-back spirit into any space.

\$1500

(RE)BIRTH OF VENUS





NFS

Our twist on the classic “Birth of Venus” by Botticelli, (Re)Birth of Venus features a distinct center panel made of pre-loved boardshorts. Pieced by Catherine Potdevin, this quilt utilizes the iconic Asian Gate Pattern, paired with a stunning blend of Tokyo Milk Fabrics. By taking a modern approach to historical art, this piece exudes the core of SpencerManon.



COSMOS I





Using an eclectic mix of scrappy and Giucy Giuce fabrics, Cosmos I comes together to create a stunning lunar cycle. Inspired by the Colourwerx Cosmos pattern, and enhanced by a ripple digital design, it combines traditional precision with a sleek, modern finish. The backside features a unique blend of forestry fabrics, with floating ducks as the primary eye-catcher. Pieced by Catherine Potdevin, it offers a unique take on a conventional pattern.



\$1200

COSMOS II





A close relative of Cosmos I, Cosmos II features a similar lunar cycle, utilizing striking yellow and scrappy fabrics to bring the piece together. Inspired by the Colourwerx Cosmos pattern, and elevated with a modern set digital design and custom quilting, this piece brings a soothing, yet bold vibe to any space. The back features a blend of traditional woodsy fabrics, placed in a linear fashion. Pieced by Catherine Potdevin, this quilt stands as a unique version of the traditional pattern.

\$1500

LA FRIDA.



La Frida is a vibrant tribute to the iconic artist, featuring the Mirror, Mirror pattern by Donna Jordan for Jordan Fabrics. This piece integrates a striking center panel portrait, with surrounding homages and floral motifs on both the front and backside. The digital pattern, Cabbage Rose, is intricately quilted, enhancing the detailed designs. Crafted by Catherine Potdevin from high-quality fabrics by Alexander Henry and Robert Kaufman, this quilt combines artistry and comfort. A stunning piece for any Frida Kahlo appreciator, this quilt captures the essence of her bold and colorful spirit.



\$650

CHECKMATE





This quilt brings a playful twist to classic design, blending bold patterns in a checkerboard layout. Pieced by Catherine Potdevin, this particular quilt has no distinct pattern, referred to in the quilting world as an “Improv Quilt.” By using scrappy fabrics with a combination of corduroy, satin, and velvet textures, as well as the Fuchsia digital design, this piece is anything but ordinary.



\$1000

NEPTUNE'S MUSE





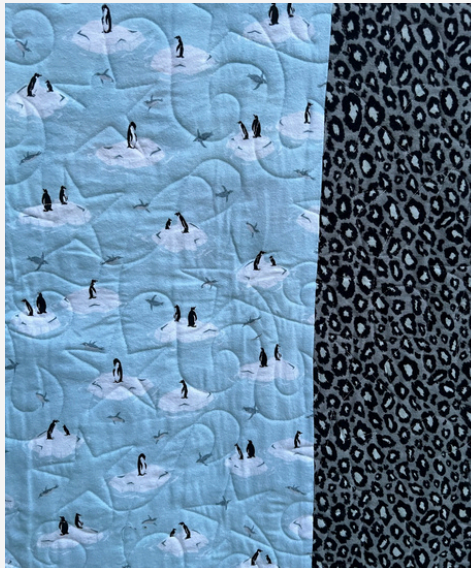
Designed and created by Cathy Potdevin, Neptune's Muse features the timeless Log Cabin pattern with a distinctive twist, a 34" x 34" boardshort panel in the center, featuring one of our striking lost girls. Crafted from a diverse collection of scrappy fabrics, with custom center quilting, this piece perfectly embodies that unique California-girl vibe. On the backside, you'll find a sleek combination of grey and white panels, with a dash of hot pink. Standing at a striking 82" x 105," this quilt creates a bold vibe and striking style.



\$1750

PAST YOUR BEDTIME

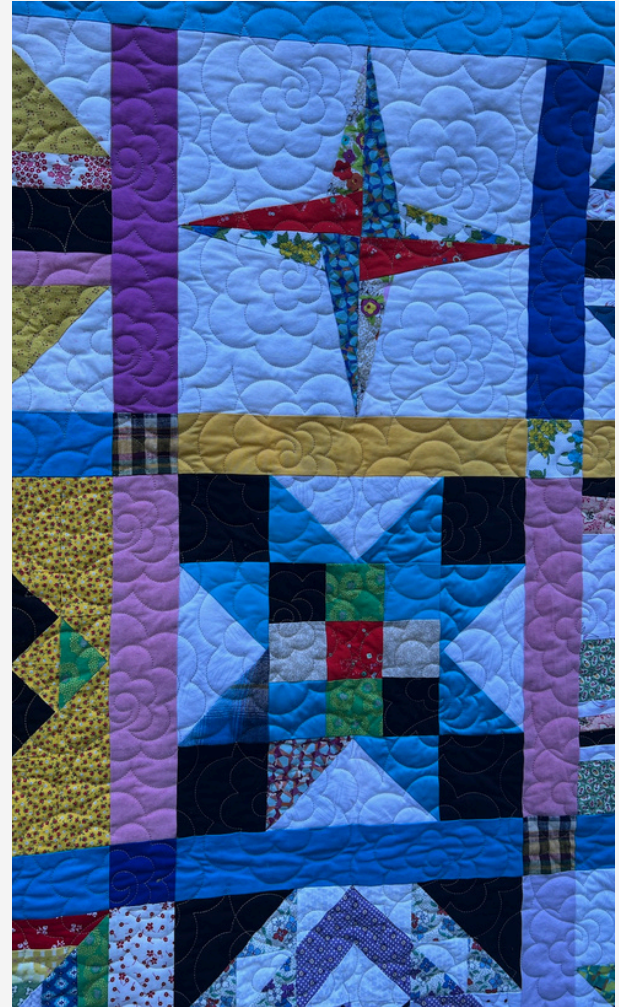




Crafted by Catherine Potdevin, Past your Bedtime is a bold statement piece that electrifies any space. This baby quilt is a riot of vibrant fabrics, pieced together in a dynamic composition. The Dancing Stars digital design and white threadwork create a dramatic contrast, making this quilt an unforgettable addition. On the back, you'll find a playful blend of penguin and leopard print. With its fearless blend of color and pattern, Past your Bedtime isn't just decor—it's a daring work of art.

\$700

THE COLORING BOOK





Pieced by Catherine Potdevin, *The Coloring Book* features an eclectic mix of Victoria Findlay Wolfe and scrappy fabrics. The Rhododendron digital design gives it a unique edge, showcasing a modern twist on traditional craftsmanship. Inspired by the Birthday Block of the Month Club, which features blocks designed by Andrea Tsang Jackson, Bonnie K. Hunter, Ricky Tims, Sheri Cifaldi-Morrill, Carole Lyles Shaw, Georgia Bonesteel, Pat Sloan, Zak Foster, and Suzy Williams. With this collection, The Quilt Alliance aims to Document, Preserve and Share Quilt stories for future generations. With a touch of history, and a splash of electrifying blues, this piece creates the perfect fusion of vintage design and modern style.

\$750